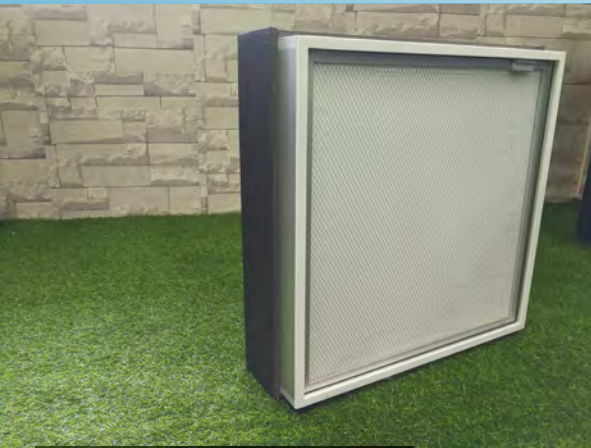


Replaceable HEPA module RPM

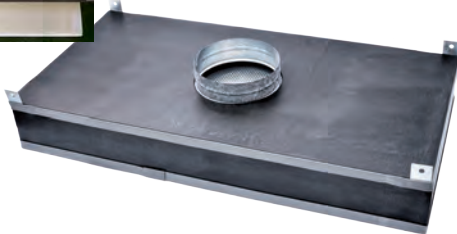
Final or HEPA Filters H13/H14 99.99%/99.999% @ 0.3µm U15 99.9995% @ 0.1-0.2µm



General Characteristics

The Removeable or Replacement HEPA Modules (RPM) is similar to DTM (Disposable Modules) to achieve laminar air flow and suitable in all areas include lower ceiling isolation wards, laboratories and operating theatres. Although slightly higher initial cost, it offers an easy but lower cost hassle-free installation and replacement of HEPA filter. The filter replacement is from the room side. Very fast replacement and low downtime which will not affect operations and air quality. Suitable for laminar air flow cleanrooms, isolation wards or operating theatres and pharmaceutical productions.

The housing is made of extruded aluminium and galvanised steel, 100% sealed and comes with knife edges. The filter is secured in the housing with four aluminium T-plates clips underneath. The specially designed module is installed with HEPA gasketed filters which ensures leakfree installation and facilitates onsite testing.



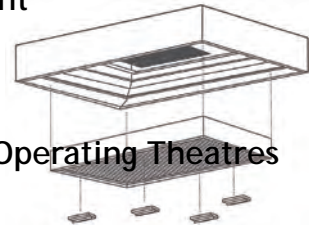
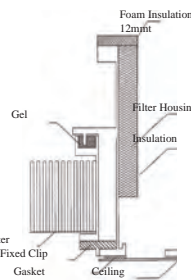
Models: RPM TR
Replaceable HEPA Module, T-Grid Gasket, 12"/10"
Collar
with Foam Insulation
Size: 1201x591, 591x591

Innovative designed RPM TR gasket type achieve same filter leak free modules like gel type.
Maintenance free long life durable gasket
Hassle free replacement and lower cost for replacement
Universal Standard Factory Stocked HEPA filters sizes

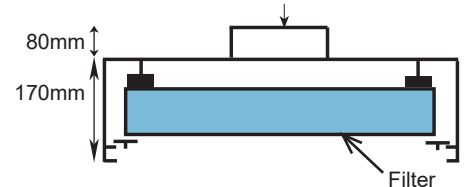


T-Grid

- RPM TR (Gasket) new 2017
- + Extruded Aluminium Frame Module
- + HEPA Filter Gasket leakfree installation
- + Roomside HEPA Replacement
- + Expanded Filter Mesh
- + Toolfree Filter Clips
- + w Fan Unit Option
- + Laminar Air Flow Wards & Operating Theatres



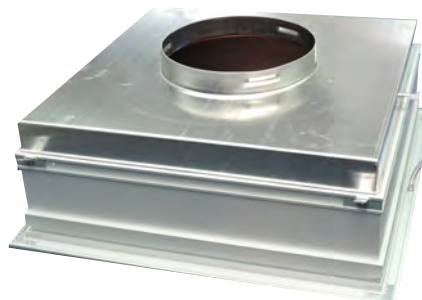
Ø10" (250) mm Collar for 591x591
Ø12" (300) mm Collar for 1201x591



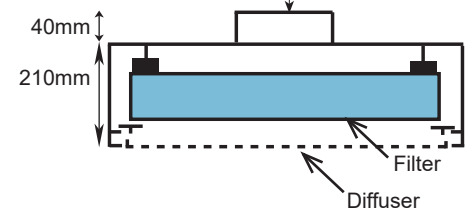
T-Grid with Diffuser Gasket



- New 2015 RPM TD with Diffuser (Gasket)
- + Extruded Aluminium Frame Module
- + HEPA Filter with Rubber Gasket Bracket Clamp
- + Roomside HEPA Replacement
- + Perforated Diffuser
- + Dual T-grid or Ceiling Suspended Installation
- + Laminar Air Flow Wards and Ultraclean Major OT use



Ø10" (250) mm Collar for 595x595
Ø12" (305) mm Collar for 1210x600



static pressure port

RPM Replaceable HEPA module

Final or HEPA Filters H13 99.99% @ 0.3um U15 99.9995% @ 0.1-0.2um

Specifications

Model	RPM TR FU		RPM TR ^{2017 Model}		RPM TD	
Description	Replaceable HEPA Modules (for FFU)		Replaceable HEPA Modules		Replaceable HEPA Modules with Diffuser	
Features	1. T-Grid		1. T-Grid		1. T-Grid or Ceiling Suspended	
	2. Filter Gasket upstream		2. Filter Gasket Upstream		2. Rubber Gasket	
	No Collar	No Collar	OD12" (300mm) collar	OD10" (250mm) collar	OD12" (305mm) collar	OD10" (250mm) collar
	4. No Insulation		4. Foam Insulation 12mm		4. No insulation, x1 Static port	
Module Size	1201 x 591 x 160	591 x 591 x 160	1201 x 591 x 250	591 x 591 x 250	1210x600x250	595x595x250
Actual Filter Size mm	1168 x 558 x 70	558 x 558 x 70	1168 x 558 x 70	558 x 558 x 70	1138x528x70	525x525x70

Efficiency	99.99% @ 0.3um		99.9995% @ 0.1-0.2um	
Rated Airflow cmh **				
Rated Airflow at 0.45 m/s TD 1138x528 / TD 525x525	900	450	900	450
Initial Pressure Drop Pa	120	120	160	160
Filter Class to EN1822	H13/ H14		U15	
IES RP-CC-001.3	Type C / Type D		Type F	
EN1822 MPPS Global/ Integral value	≥99.95% / 99.995%		≥99.9995%	
PAO/ DOP/PSL @ 0.3um	≥99.99% / 99.999%		-	

Note: Performance data is based on IES RP-CC-001,CC-007,CC-034,NSF49 or EN1822, data provided is for comparison and information

MPPS: Most Penetrating Particle Size

HEPA filters in conformance to Test Specifications will be affixed with label on HEPA Filters.

** Please note for duct/ flexible duct installations & design incoming air duct velocity should be kept within design limits to avoid unacceptable noise or friction loss.

Test ports are to be installed at flexible duct or duct side a distance away from HEPA filter

Technical Data

Filter Media

Water Repellent Micro Fibreglass Paper

Enclosing Frame

Anodised Aluminium / Galvanised Steel

Module Type

Model TR,TR FU, TH: T-Grid

Model TD: Ceiling Suspension or T-grid

Duct Collar

10" (250mm) for 2x2ft (595x595)

12" (300mm) for 4x2ft (1210x600)

No collar for RPM TR/TH FU module

Separator

Hotmelt

Sealant

Polyurethane / Hotmelt

Gasket

TR: Rubber Gasket at filter upstream(air in)

TH: Silicon Gel Channel at upstream

TD: Rubber Gasket upstream

TR FU: Rubber gasket on module both sides

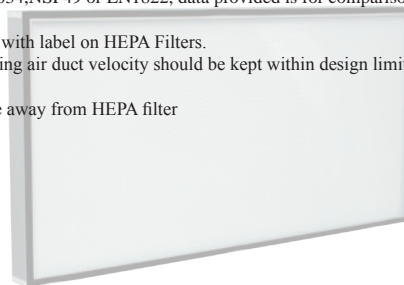
Filter Faceguard

TH/TR: Expanded Aluminium Mesh at Filter

TD: Aluminium Perforated Diffuser

Hanging Brackets

x4 top of module



TD/ TR T-grid Installation

Ceiling Hole Opening

TR 591x591 : 566mm (560-570)

TH 600x600 : 575mm (570-580)

TD 595x595 : 570mm (565-575)

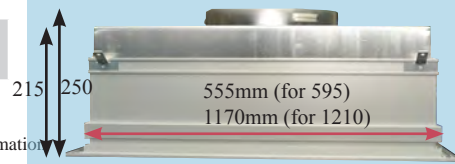
TR 1201x591 : 1175x565mm (1170-1180x 560-570)

TH/ TD 1210x600: 1185x575mm (1180-1190x570-580)



RPM TD - 2015 New Features

- + Aluminium Perforated Diffuser
- + Rubber Gaskets Type Filters with Bracket Clamp Screw Tightening
- + Both T-grid or Ceiling Suspended Installation
- + Built in Pressure Ports



TD Ceiling Suspension Installation

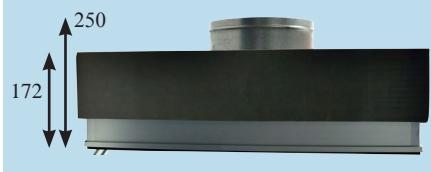
Ceiling Hole Opening

TD 595x595 : 570mm (565-575)

TD 600x1210: 575x1185mm (570-580x1180-1190)

RPM TR - 2017 New Features

- + Expanded Filter Mesh Faceguard
- + Gasket Filter upstream with T-clips
- + T-grid Installation



Static Pressure Port
for RPM TD only.
Optional for RPM TR

Optional

TR/TH and TD Adjustable inlet damper

Maximum Operating Temperature

60°C

Relative Humidity

80%

Recommended Final Pressure Drop

250 Pa

Maximum Final Pressure Drop

450 Pa